

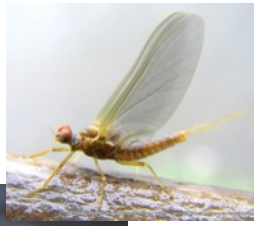
Flying In From Idaho

Halfback Emerger

By Todd A. Schotts

For this month's "Fly Of The Month" we headed to the land known for its spuds; yes that's right we are heading west to Idaho! The fly we will look at, is truly an amazing fly known as the Halfback Emerger, by famed fly tier and writer Mike Lawson.

Before we dive into the details on this amazing fly, here is the fishing report on Mike Lawson...Mike was born and raised in southeastern Idaho, where Mike and his wife are four generation Southern Idaho natives. He was originally a school teacher for six years, who guided during the summer months. Mike and his wife also tied flies commercially for many years. In 1977 they opened Henry's Fork Anglers Fly Shop in Last Chance, Idaho. Mike is a Signature Fly Designer for Umpqua and is also an accomplished writer. He has written two books *Fly Fishing the Henrys Fork* and *Spring Creeks*, plus many articles in various fly fishing and tying publications. He appeared in many videos fishing or tying his signature patterns. Mike is a founding member of Henry's Fork Foundation, along with life time membership of the FFF and Trout Unlimited. Besides the Halfback Emerger, some of Mike's other flies are the: Floating Nymph, Hemmingway



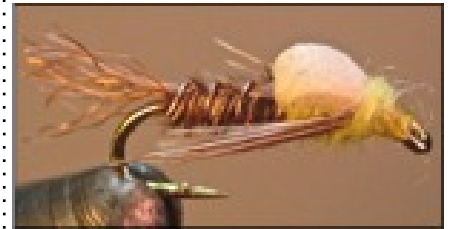
Caddis, and Brown Drake Lawson, just to name a few.

This astounding Halfback Emerger was developed in the late 1990's to represent an emerging mayfly particularly Blue Wing Olives and Pale Morning Duns. When tying this pattern, remember it is actually a shallow nymph presentation to the inhabitants of the watershed below. This means the fly pattern will be presented only in one to two inches below the water, making this an ideal emergence pattern. The original pattern was tied with a deer hair wing case, but closed cell craft foam can be substituted in its place. By doing this, it make the wing case a little more durable.

When fishing this pattern, you will want to avoid using an indicator or a dry fly when fishing this pattern as it will cause both patterns to have an unnatural drift. It is best to just use the nymph by itself and watching your line/leader connection for unusual movement - something similar to the technique that is used in High Sticking or European Nymphing. Remember, when fishing to the hatch, there is always more activity below the surface than what seen above, and this fly will be a total advantage in this situation. Until next month tight lines and snazzy flies.



Deer hair version



Foam version

HOOK: TMC 100 size 18 to 20
THREAD: Olive or Yellow, 70 denier or 8/0
RIB: Small Copper Ultra Wire
SHUCK: Brown Z-Lon
WING CASE: Natural Medium Deer Hair or Tan Foam
ABDOMEN: Pheasant Tail
THORAX: Superfine Dubbing – BWO Olive or PMD Yellow
HEAD: Superfine Dubbing – BWO Olive or PMD Yellow